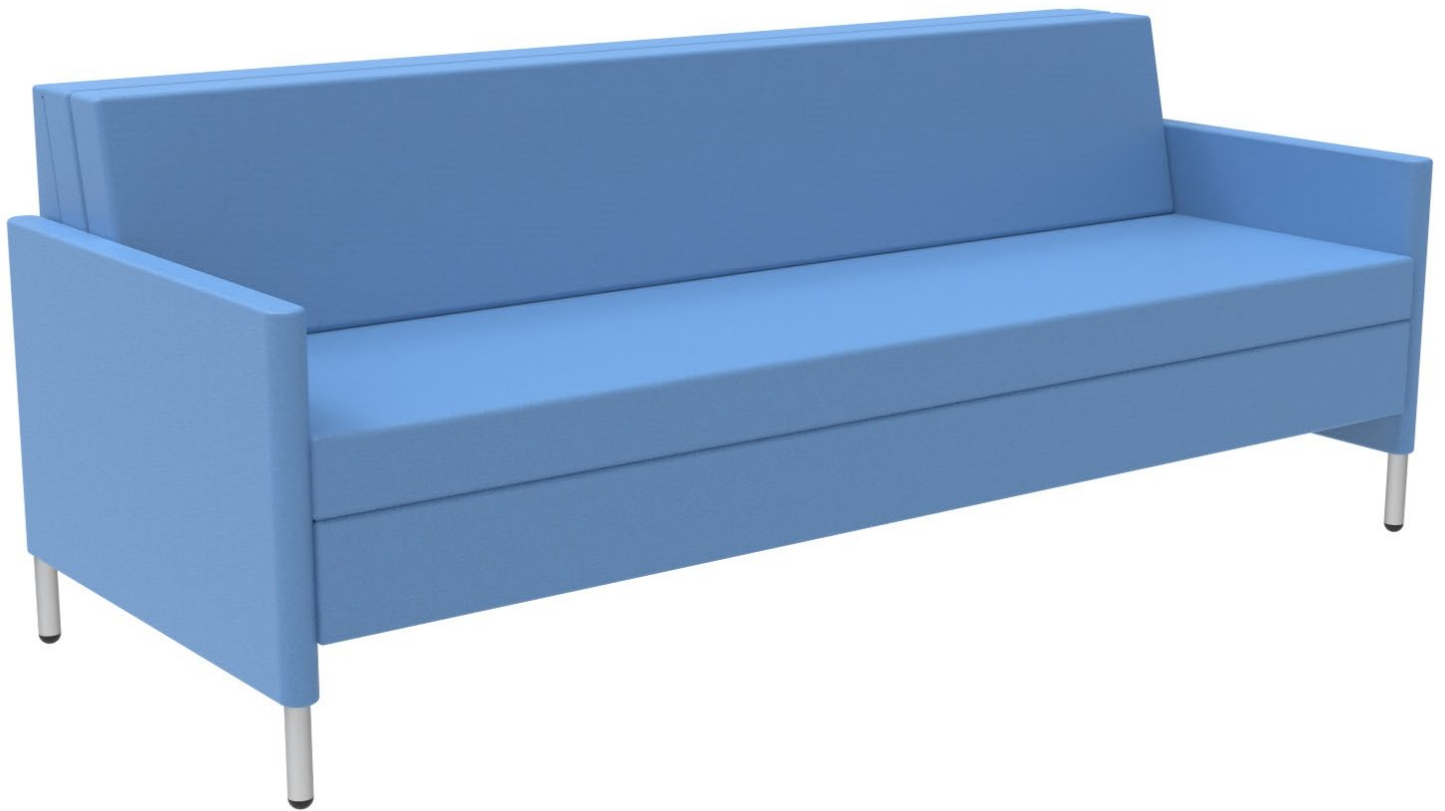


Strada Sleeper – STS176

Product Documentation



This document includes:

01 End of life and Recovery options

Disassembly Instructions

Strada Sleeper – STS176

Time Required: Approximately 30 minutes

These instructions may be used to disassemble all models in the Strada Sleeper Series

Tools Required

Power Drill

Phillips & Hex Bit



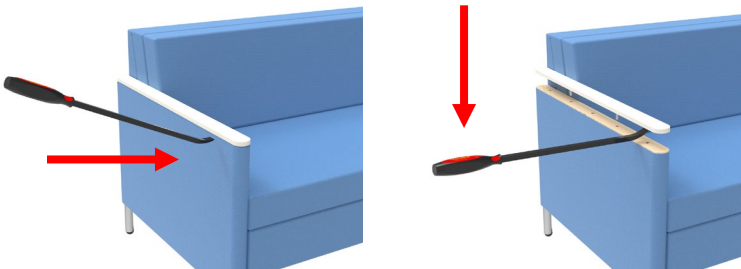
Utility knife

Pry Bar



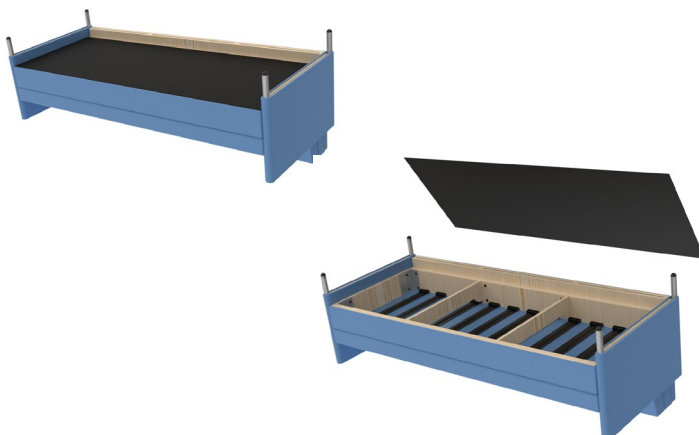
Step 1

* If the sleeper has arm caps use a pry bar for removal. Insert the tool under the arm cap and push down on the handle. Repeat this at the front middle and back of the arm until the cap is free.



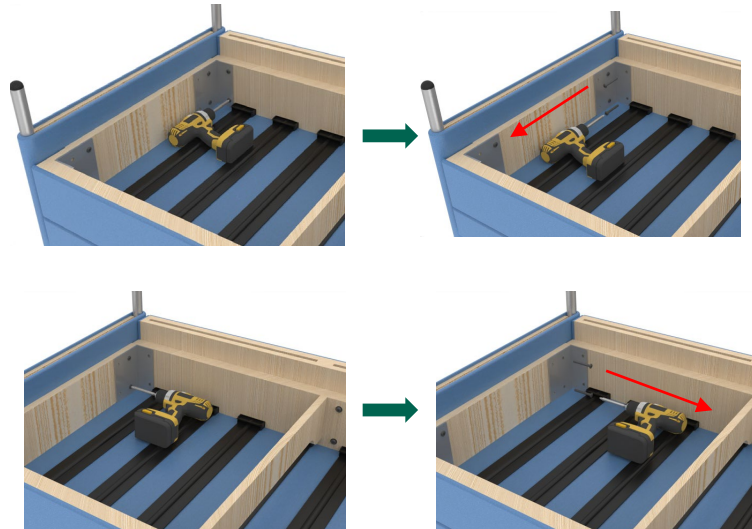
Step 2

Flip the couch over so it is resting on its arms/back. Using a utility knife remove the dust cover to expose the seat frame.



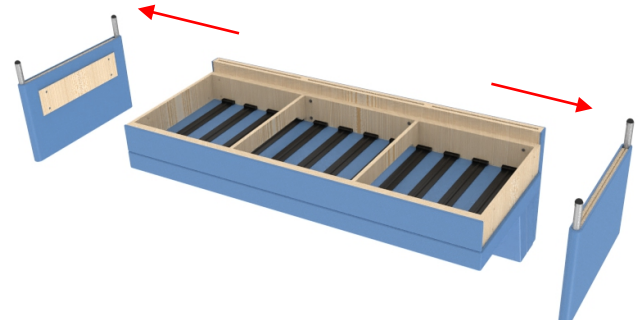
Step 3

Remove the brackets located in the corners on the seat frame using a power drill and a Phillips head bit. Repeat for all 4 brackets.



Step 4

Remove the arm panels

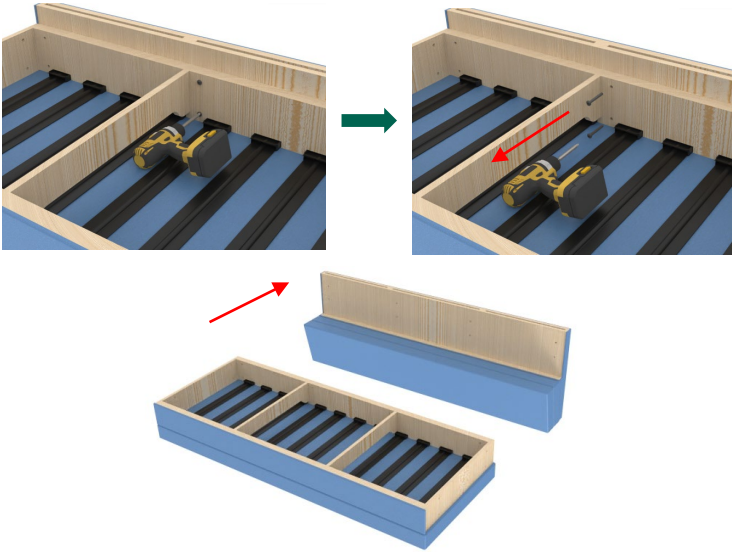


Disassembly Instructions

Strada Sleeper – STS176

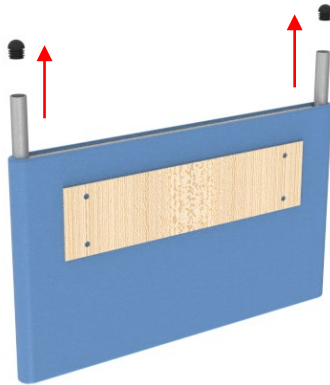
Step 5

Remove the remaining 4 screws and separate the seat box from the back.



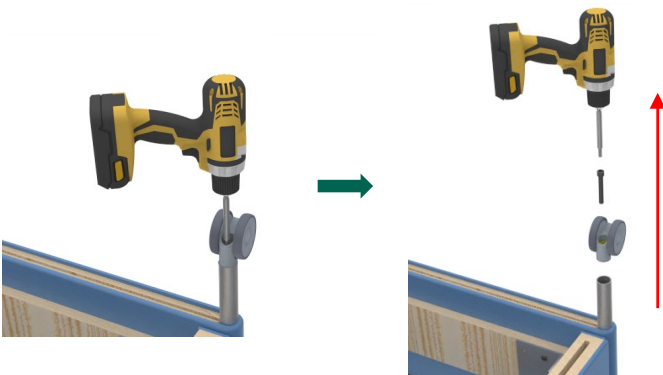
Step 6

Remove all 4 glides from the bottom of the arm frames. Use a flathead screw driver or similar tool if they are unable to be freed by hand.



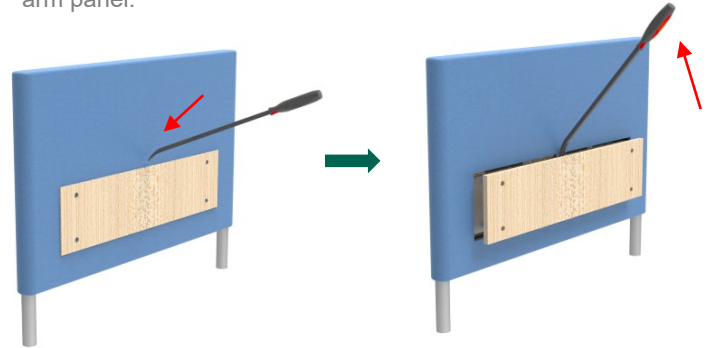
Step 7

* If the sleeper has casters use the drill to remove the single bolt located at the bottom of the caster sleeve. Repeat this for all 4 casters.



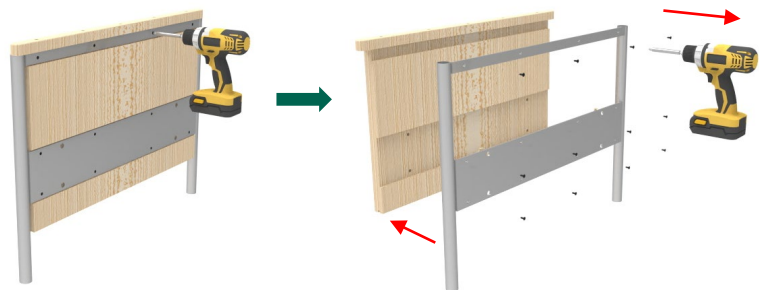
Step 8

Use the pry bar remove the wood spacer that is stapled to arm panel.



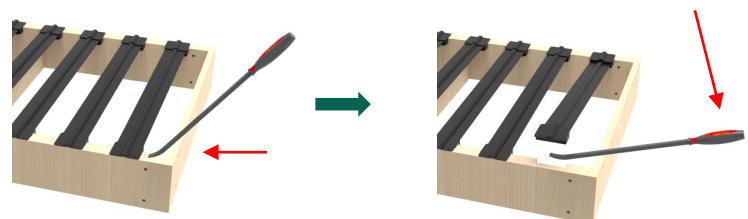
Step 9

After removing the fabric and foam from the arm frames (see page 3) use the power drill and Phillips bit to the wood arm panel from the steel arm frame by removing all 12 screws. Repeat for both arms.



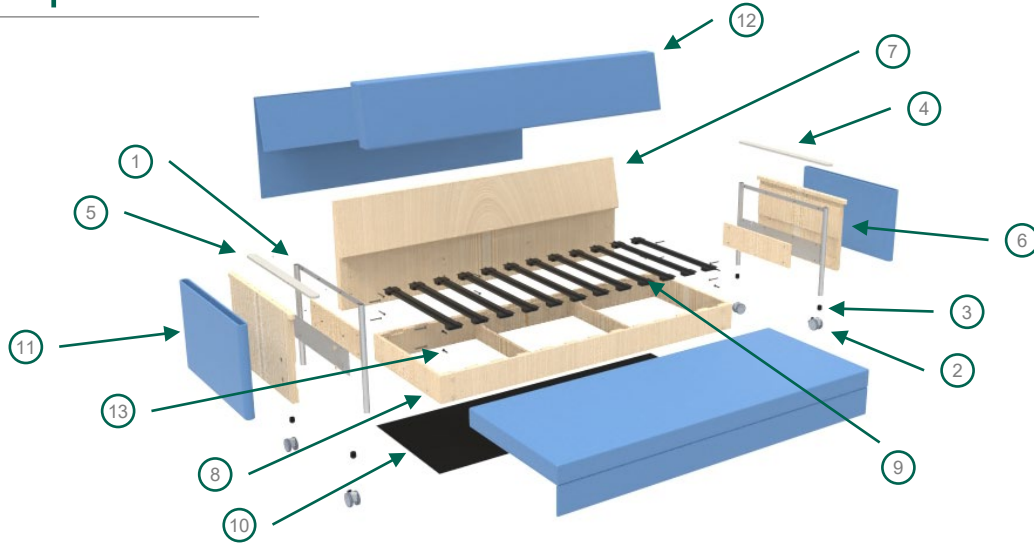
Step 10

After removing the fabric and foam from the seat box (see page 3) use the pry bar to remove the OKE slat and caps that are stapled to the wood frame. Repeat for all 24 caps.



Material Breakdown

Strada Sleeper – STS176





Upholstery and foam Removal

Sleeper Seat and Back

Using a knife (preferably a box cutter) carefully slice the upholstery around the bottom so that the upholstery is free from the staples. Remove the upholstery. Taking the knife again, carefully slice the foam away from the wood panel. Cut along the strip of material attaching the sleeper surface to the back. Cut along the length of each cushion and remove the foam from the fabric.

Sleeper arms

Using a knife (preferably a box cutter) carefully slice the upholstery down the side from the top to the bottom of the arm panel. Remove the upholstery. Taking the knife again, carefully slice the foam away from the wood panel. Repeat for both arm panels.

Number	Quantity	Component	Material
1	1	Arm Frame	Steel 
2	4	Casters	General Plastic
3	4	Glides	Nylon
4	2	Arm Caps (polyester) optional*	Polyester
5	2	Arm Caps (Solid Surface) optional*	Corian® Solid Surface
6	2	Arm Panels	Plywood
7	1	Back Frame	Plywood
8	1	Seat Frame	Plywood
9	1	Oke Slats and Caps	Polypropylene
10	1	Dust cover	Non-woven Polypropylene
11	2	Upholstery pieces	Vinyl or Fabric
12	2	Foam – Seat, Back and arms	Polyurethane Foam
13	Various	Staples and Various Fasteners	Steel 

End of Life Recovery Options

Strada Sleeper – STS176

Identification of Materials		Material Recovery Opportunities		
Material	Example Components	Recycling Note	Higher Value Opportunity	Lower Value Opportunity
Please visit www.recyclingmarkets.net to find a recycling outlet nearest to you				
Plastic				
Nylon (PA)	Glide	Actively recycled into raw polymer by industrial plastic recyclers. It is important to note, however, that recycled plastic markets are highly variable and acceptance of a given material fluctuates based upon multiple factors (e.g. material type, quantity, presence of contaminants, markets for that material, etc.). Recycling value is improved with greater quantities and accurate material identification (i.e. identified by base polymer, filler, and additive content)	Recycled PA Re grind	Mixed Thermoplastic Compression Molding
General Plastics	Casters, OKE slats and caps		General Recycling, where accepted	
Polyester Resin (PET)	Arm Caps (optional)		Recycled PET Re grind	
Polyurethane Foam	Foam cushioning	Actively recycled by foam manufacturers and recyclers into carpet padding.	Recycled Carpet Padding	
Corian® Solid Surface	Arm Caps (optional)	Not currently actively recycled due to process and economic limitations. Reuse or refurbishment are currently the best options for these materials. As a low value option, the energy content can be reclaimed in a designated waste-to-energy facility equipped with proper pollution control technologies.		
Metals - Ferrous (e.g. Steel, Iron)				
Steel	Arm frames, Fasteners,	Actively recycled into raw ferrous metal ingot. Ferrous metals are easily separable from other materials through shredding and magnetic separation. Therefore, many metal recyclers will accept ferrous metals which contain small amounts of mixed materials (e.g. plastic, aluminum).	Recycled Steel Ingot	Off Grade Ferrous Ingot
Wood / Biobased Materials				
Plywood	Arm wood, Seat Frame, Back frame	Not currently actively recycled due to process and economic limitations. Reuse or refurbishment are currently the best options for these materials. As a low value option, the energy content can be reclaimed in a designated waste-to-energy facility equipped with proper pollution control technologies.	Not Actively Recycled (Currently)	Waste to Energy

End of Life Recovery Options

Strada Sleeper – STS176

Textiles				
Natural Fabrics	Determined by customer at time of order.	Recycling possible into non-woven fabrics.	Recycled fibers into shoddy for use in non-woven products	Landfill Disposal
Polyester Fabrics	Determined by customer at time of order.	Recycling possible into raw polymer.		
Mixed Fabrics	Determined by customer at time of order.	Recycling possible into non-woven fabrics.		
Vinyl	Determined by customer at time of order.	Recycling possible only through extraction based processes.	Recycled PVC polymer through extraction based processing	